



Eriksdalsbadet, Stockholm, Sweden. Architect: Erséus, Frenning & Sjögren Arkitektkontor AB. Contractor: Perakustik AB. Photo: Åke E-son Lindman.



Ecophon CADsupport

Ecophon Wallpanel could be used as an alternative or supplement to an acoustic ceiling. In a circular shaped room as above, Ecophon Wallpanel Master C/alpha are used to supplement the ceiling tiles in order to reduce the reverberation time.

Ecophon Wallpanel Master C/alpha, as a standard, are installed in a self-supporting framework with concealed profiles in the vertical direction and with visible white steel profiles in the horizontal direction (see details on next page).

### Example above

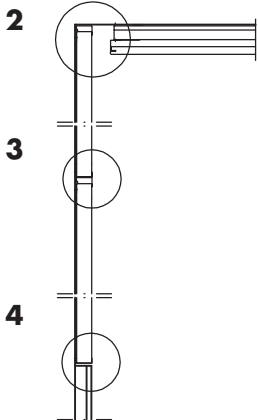
In the example above special panels are used to conceal the profiles in horizontal direction (see details on next page).

A distance is created between the wall and the ceiling in order to emphasise the transition (see details on next page).

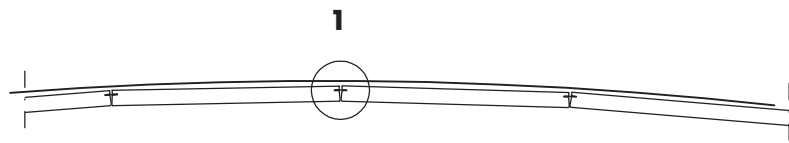
Read more on the other side ►

# Technical specification

## Ecophon Wallpanel Master C/alpha



SECTION



PLAN FASSETTED SOLUTION

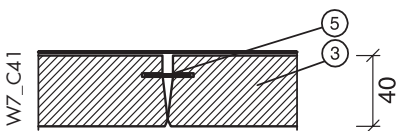
### Humid environment

The potential condensation and corrosion risk in rooms with high relative humidity should be carefully surveyed before sound absorbers are fitted. Installation accessories with additional corrosion protection should be considered.

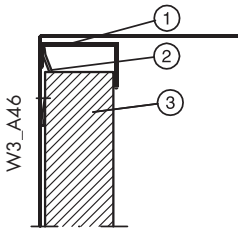
For detailed drawings see below.

Drawing numbers (ex. W3\_A46) as below refers to the Ecophon CADsupport.

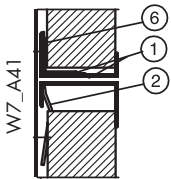
### Details for solution with standard products



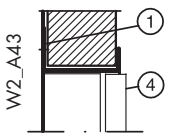
Detail 1, horizontal



Detail 2



Detail 3

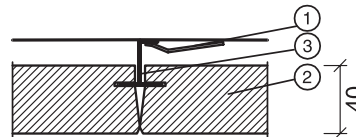


Detail 4

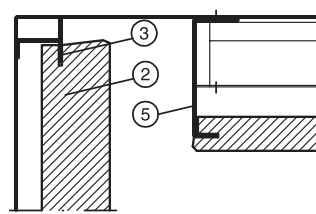
VERTICAL DETAILS

1. Connect Channel trim 0261 alt. Connect Hygiene C3 Channel trim 3465
2. Connect Fixing bracket 0214
3. Connect Wall panel Master/C alpha
4. Ceramic tile
5. Connect Splines 0209
6. Connect Direct fixing plate 0032

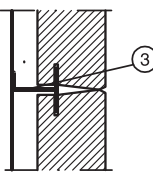
### Details for solution as showed in front page (Not standard panels)



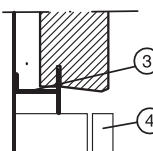
Detail 1, horizontal



Detail 2



Detail 3



Detail 4

VERTICAL DETAILS

1. Connect Fixing bracket 0214
2. Connect Wall panel Master/C alpha, special made edge
3. Connect Z-profile 0227
4. Ceramic tile
5. Customized u-channel curved in radius